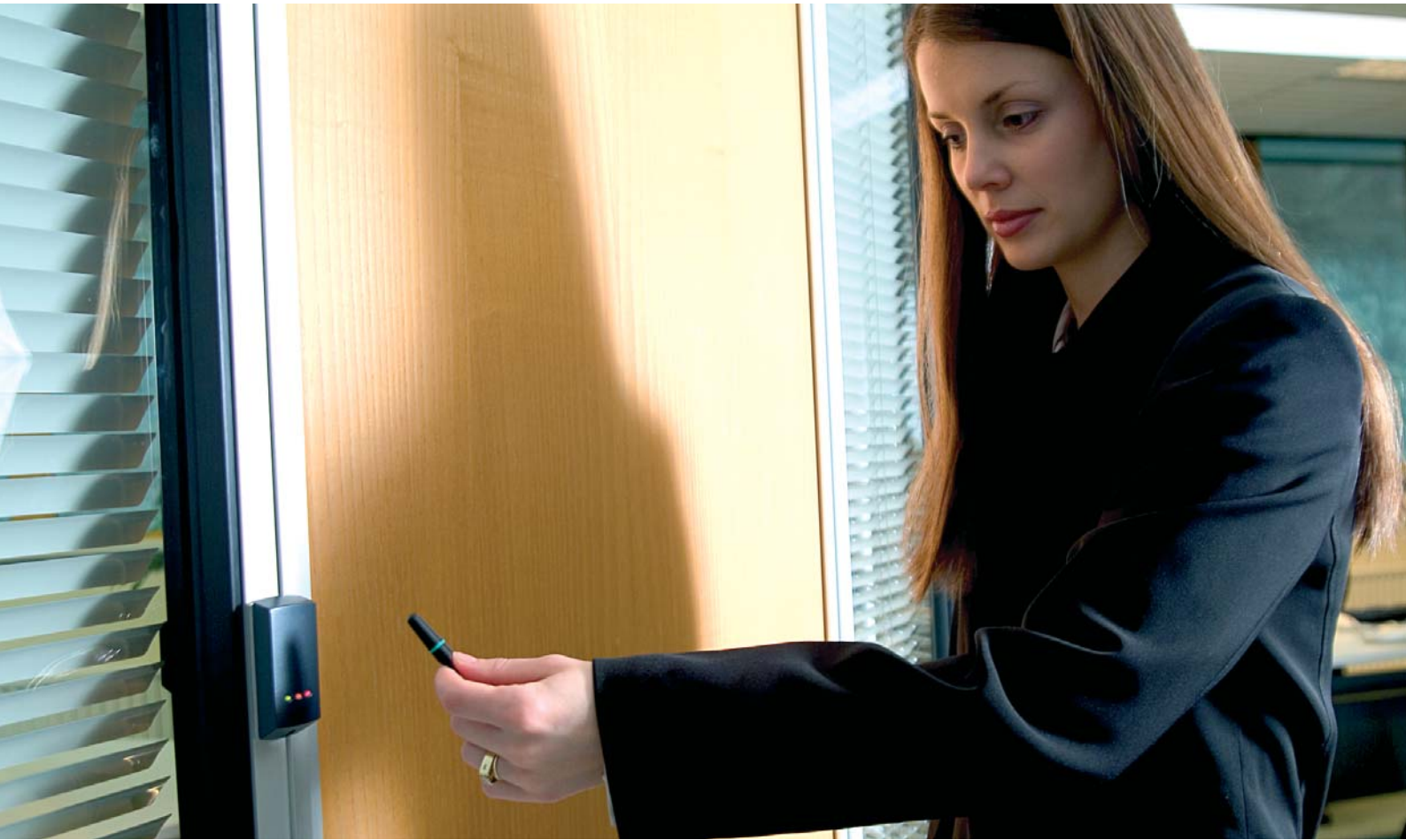


# PROXIMITY - Simple, Secure

DOOR SPRING  
SUPPLIES

PROXIMITY access control from Paxton



## Regain control of your building with PROXIMITY access control

- PROXIMITY access control gives you control over who has access to your building
- Keys also do this - so what is the difference?
- When you lose a key, you have the expense and inconvenience of replacing locks and other keys, or you accept that your building is no longer secure
- PROXIMITY gives easy, convenient access for those who have a right to enter the building
- PROXIMITY is maintenance free
- PROXIMITY is a user friendly, reliable and convenient way to unlock a door. No more searching for keys or locks getting jammed

Want to know more? Turn over for more information...

# PROXIMITY - Simple, Secure

## Four simple steps to control

- 1 A PROXIMITY reader is installed
- 2 A card pack is ordered to accompany the reader
- 3 The installer presents the enrolment card to the reader
- 4 All cards in the card pack are immediately valid for use

### Notes

The enrolment card is found in the card pack.

The card pack is unique to your building and contains either 10, 25, 50 or 100 user cards.

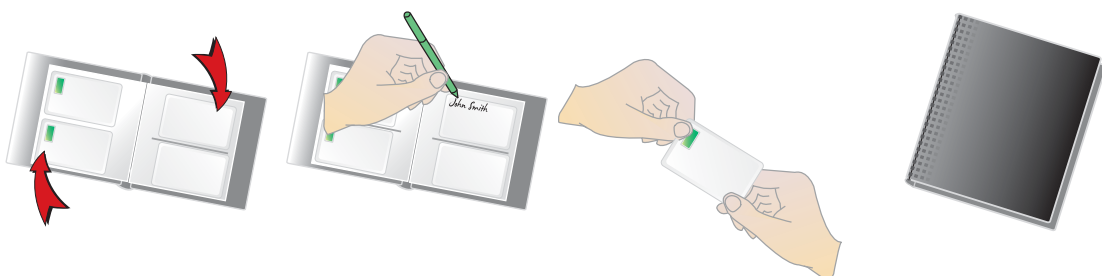
## Enrolling a card pack



## All you have to do is issue the cards

- The card pack contains user cards and shadow cards
- The user cards are in pockets on the left-hand side of the wallet
- The shadow cards are in pockets on the right-hand side of the wallet
- Simply supply a user card to each member of staff
- Record their names on the corresponding shadow cards
- The shadow card pockets have a cut-out window to make writing on the shadow card easy

## Issuing user cards



# PROXIMITY - Simple, Secure

## Gaining access

- The user presents their card to the reader and the door unlocks
- Cards or keyfobs are easy to carry in a wallet or on a keyring
- Cards and keyfobs have no batteries
- Convenience and ease of access are assured



## Lost card!

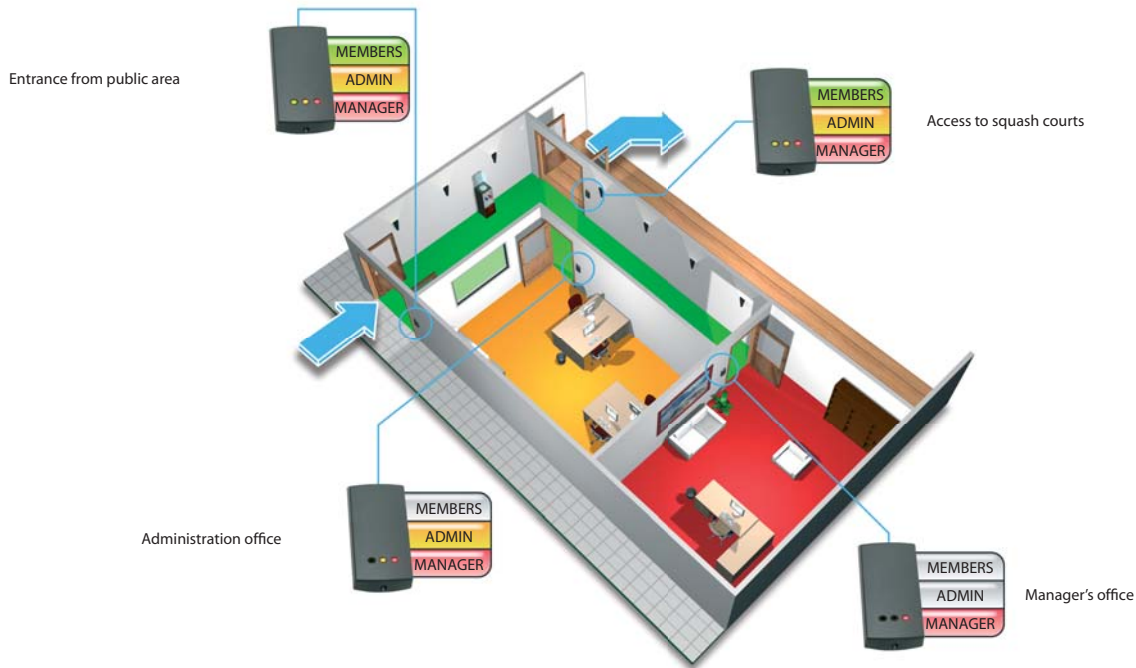
- Open the card wallet and remove the shadow card with that person's name
- Go to the reader and present the shadow card
- The lost user card is now barred
- If found, the lost user card will no longer allow access



# PROXIMITY - Simple, Secure

## Restricting access by token colour

PROXIMITY systems can be used to control access through several doors in a building. Access can be restricted to certain areas based on the colour of a user's token. A function card pack is required.



- The example above shows a squash club with 4 doors controlled by PROXIMITY
- Green tokens are issued to club members
- Amber tokens are issued to administration staff
- Red tokens are issued to management staff
- Members are permitted access only through the main entrance and into the squash courts
- Administration staff are allowed everywhere other than the manager's office
- Management staff have unrestricted access
- The colour 'zoning' system is easy to manage and keeps people where they are meant to be!

## I need access control!



Door Spring Supplies Limited, Unit 10, Bentley Court, Paterson Road  
Finedon Road Industrial Estate, Wellingborough, Northants, NN8 4BQ.

Telephone: 0844 504 6575 · Fax: 0844 504 6576

Email: [info@autodoorsprings.co.uk](mailto:info@autodoorsprings.co.uk) · [www.autodoorsprings.co.uk](http://www.autodoorsprings.co.uk)

